



intimus CR-360 MCP

CREASING&PERFORATING MANUAL MACHINE



Product user manual

intimus International GmbH
Bergheimer Straße 6-12
88677 Markdorf
Germany
www.intimus.com

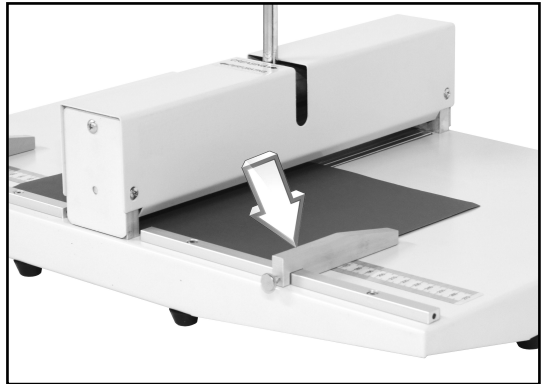
95518 1 12/18

1. Creasing Operation Instructions

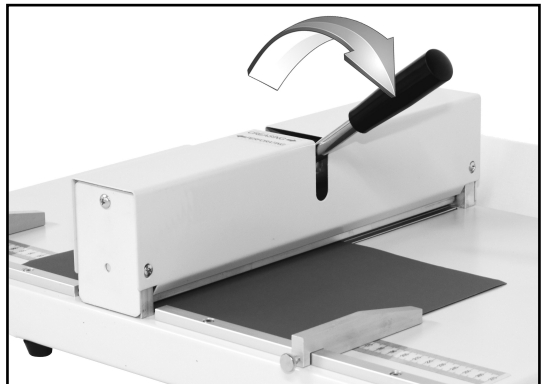
- Move the right locator to the creasing position, then fasten the screw.



- Insert the paper through the creasing device and ensure the right edge of the paper stays close with the right locator.



- Press the handle to the right till the bottom and release the handle, then put the creased paper out.

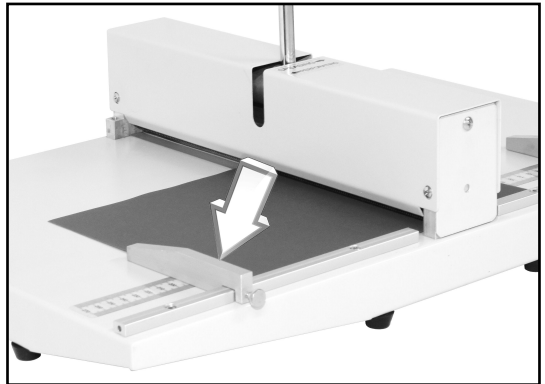


2. Perforating Operation Instructions

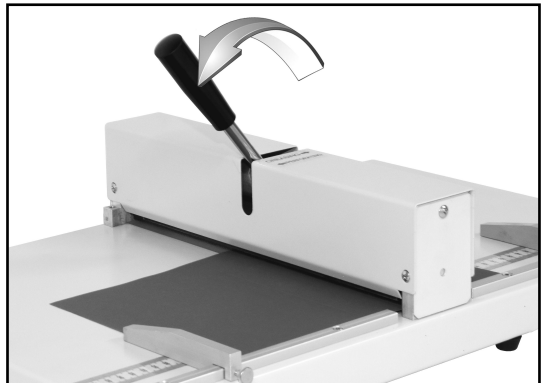
- Move the left locator to the perforating position, then fasten the screw.



- Insert the paper through the perforating device and Ensure the left edge of the paper stay close with the left locator.



- Press the handle to the left till the bottom and release the handle, then put the perforated paper out.



3. Changing Knife Cushion

- Behind the machine, there's a screw cap.



- Pull the perforating cushion out of the machine with the screw cap, turn over the perforating cushion, then push the cushion back into the machine.



4. Technical Parameter

Function/Model	CR-360 MCP
Working Width	350mm
Working Thickness	< 0.35 mm
Creasing Impress Width	1.3mm
Creasing Impress Thickness	0.4mm
Perforating Impress Width	1.2mm
Perforating Impress Thickness	1.2mm
Machine Size	60X38.5X16cm
Machine Weight	10.5kgs